

INAX

JAPANESE  
TILE WORLD





Imperial Hotel reconstructed in Museum Meiji-mura

# About INAX

The history of INAX can be traced back over 100 years when its forefathers worked on producing the tiles for the second main building of the Imperial Hotel designed by the architect Frank Lloyd Wright in Tokyo, Japan. By determining the properties of clay and the impact of fire, through numerous trials, they succeeded in the large-scale production of the decorative tiles, which became the foundation of the company. Since then, INAX has continuously pursued to deliver products for a new and better living. INAX has cultivated the skills to produce tiles that offer sophisticated expressions through delicate coloring and texture, gaining inspiration from Japanese tradition, culture, and the seasonal changes of nature.

INAX creates beautiful, innovative products from Japan that make everyday life easier, healthier and more enjoyable, enabling everyone to live well.

Philosophy

# JAPANESE TILE WORLD

To stand in awe of, and with affection for, Mother Nature.

Embedded in the Japanese DNA is the desire to seek out the spirit of life across infinite phases in nature—beyond plants and flowers, at times among inorganic sheer rock and rippling water.

Sensibility and aesthetic awareness cultivated in this nation of four seasons come alive through expressions molded from clay and fire: Welcome to Japanese Tile World by INAX.

Here, the elements of era and trends are superseded by timeless spatial design that breathes a new spirit.

Here, the deepest mental state fills all voids.



## INSPIRATION

Taking inspiration from Japanese traditions, culture, and seasonal colors has brought forth Japanese Tile World. Here, the sensibility, refinement, and techniques cultivated by the Japanese are carefully preserved.

### 1 DENT CUBE × MASU

Masu, a square wooden cup, was traditionally used to measure portions of rice. Today, they are primarily used as a vessel to serve sake, especially when a sake barrel is opened at celebrations by breaking the lid as a symbol of good fortune. DENT CUBE evokes the image of Masu, lined up in an orderly fashion.

### 2 CRESCENT BORDER × IRAKA

Iraka, roofs of traditional Japanese houses, are made with ceramic tiles that collectively create a picturesque image of waves formed in the sky. Similarly, the spatial formation using CRESCENT BORDER tiles, individually shaped in the form of a crescent moon, presents a laced arrangement that looks like ocean waves shining with moonlight.

### 3 ORIATO × ORIGAMI

Origami originated from the etiquette of wrapping gifts and letters with washi paper, developed over 600 years ago. The spirit of placing one's thoughts and prayers in each fold lives on today when making paper cranes. With a relief that looks like fold marks of an Origami, ORIATO creates an elegant space with a modern Japanese look.

### 4 YOHEN BORDER × YOHKAN

The Japanese have traditionally expressed the wonders of nature by portraying the changes of the four seasons in sweets such as Yohkan, a classic thick jellied confection made from beans. Like the gradation of colors in the scenery, YOHEN BORDER offers a spectrum of subtle color differences across every single piece.



## C O N T E N T S

- 8 YOHEN BORDER
- 10 YUKI BORDER
- 12 2x1 INCH
- 14 SAIRIN
- 16 SUGIE SERIES
- 18 FORMAT-MIX
- 20 BIYUSAI
- 22 HOSOWARI BORDER
- 24 SEKIHA
- 26 OMBRE BORDER
- 28 TOUJURIN
- 32 YUMON
- 34 HOMURA
- 36 SENTOUSAI
- 38 DENT CUBE
- 40 CRESCENT BORDER
- 42 LASCAVE
- 44 IZUMO
- 46 MADOKA-R
- 48 KALEIDO GLAZE
- 50 RHYTHMIC II
- 52 ORIATO
- 54 KANOKO

深奥にして、雄弁。

Reticent depth, wisely eloquent.



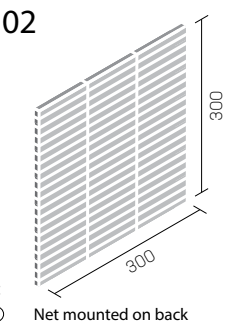


IM-1015P1/YB14

# YOHEN BORDER

IM-1015P1/YB1H~YB102

- Size/pc : 98x12.5 mm
- Size/sht : 300x300 mm
- Thickness : 6 mm
- Quantity/sqm : 11.5 shts
- Quantity/ctn : 22 shts
- Weight/ctn : 22.5 kg



Installation Material and grouting:  
 Adhesive ○ Mortar × Grouting ○

## Colour

IM-1015P1/YB1H	IM-1015P1/YB4H	IM-1015P1/YB11H	IM-1015P1/YB12H	IM-1015P1/YB14
IM-1015P1/YB14G	IM-1015P1/YB15	IM-1015P1/YB15B	IM-1015P1/YB21H	IM-1015P1/YB22H
IM-1015P1/YB31	IM-1015P1/YB32	IM-1015P1/YB102	IM-1015P1/YBNA04	IM-1015P1/YBNA07

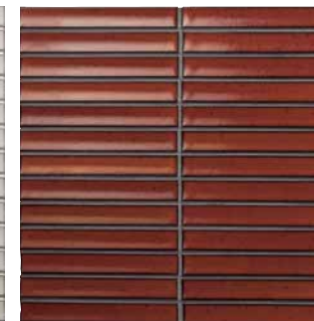


# YUKI BORDER

## Colour



IM-1520P1/YKR1



IM-1520P1/YKR3



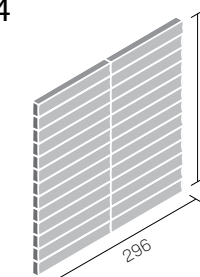
IM-1520P1/YKR4



IM-1520P1/YKR-MDK-34

### IM-1520P1/YKR1~YKR4

- Size/pc : 145×20 mm
- Size/sht : 296×292.5 mm
- Thickness : 8.5 mm
- Quantity/sqm : 11.9 shts
- Quantity/ctn : 12 shts
- Weight/ctn : 17 kg



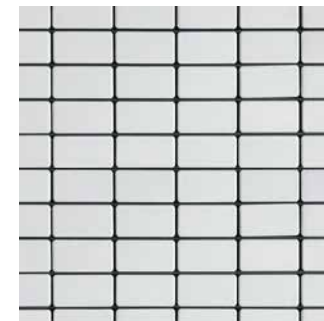
Installation Material and grouting:  
 Adhesive  Mortar  Grouting

Net mounted on back

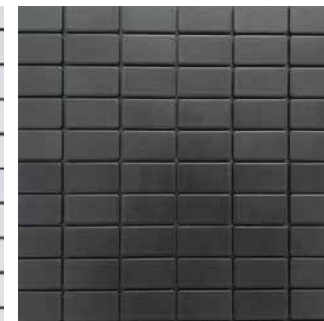


# 2x1 INCH

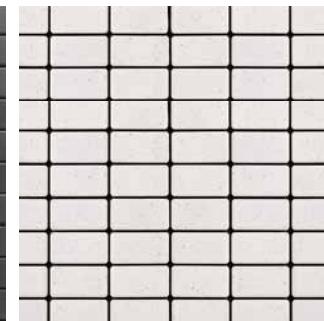
## Colour



COM-2448/1-M (grid)

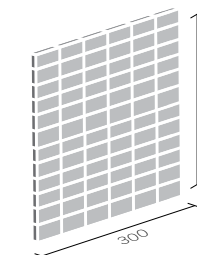


COM-2448/MDK-34-S151RK-1001 (grid)



COM-2448/S16ARS-3241 (grid)

- Size/pc : 48x23 mm
- Size/sht : 300x300 mm
- Thickness : 8 mm
- Quantity/sqm : 11.2 shts
- Quantity/ctn : 12 shts



Installation Material and grouting:  
 Adhesive  Mortar  Grouting

Front paper



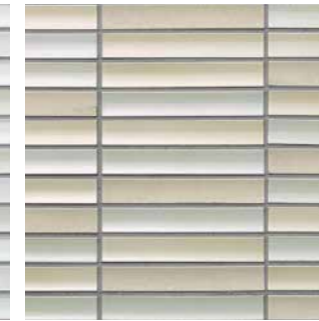


# SAIRIN

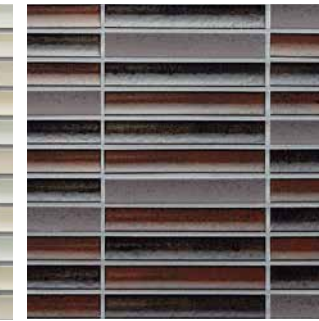
## Colour



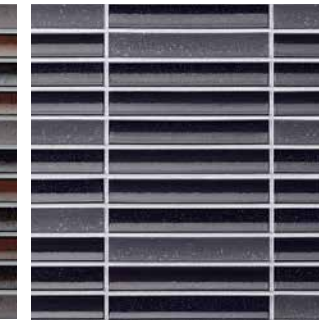
HAL-35B/SAR-1



HAL-35B/SAR-2



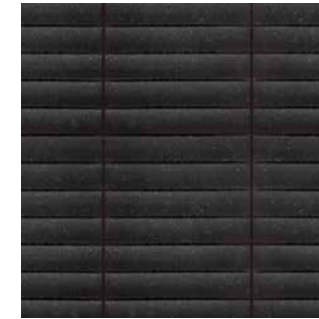
HAL-35B/SAR-3



HAL-35B/SAR-4



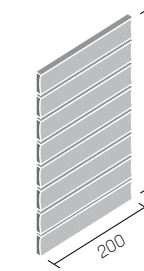
HAL-35B/SAR-1C



HAL-35B/SAR-4C

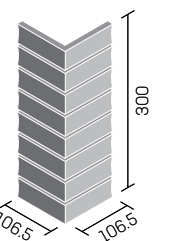
### HAL-35B/SAR-1~SAR-4

- Size/pc : 195×32.5 mm
- Size/sht : 200×300 mm
- Thickness : 9.5 mm
- Quantity/sqm : 16.7 shts
- Quantity/ctn : 15 shts
- Weight/ctn : 13.5 kg



### Corner Tile HAL-35B/90-14/SAR-1~SAR-4

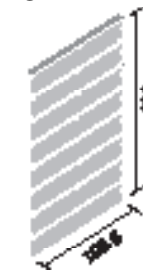
- Size/pc : (101.5+101.5)×32.5 mm
- Size/sht : (106.5+106.5)×300 mm
- Thickness : 9.5 mm
- Quantity/m : 3.4 shts
- Quantity/ctn : 15 shts
- Weight/ctn : 13.3 kg



Net mounted on back

### HAL-35B/SAR-1C, SAR-4C

- Size/pc : 195×32.5 mm
- Size/sht : 198.5×288 mm
- Thickness : 9.5 mm
- Quantity/sqm : 16.7 shts
- Quantity/ctn : 15 shts
- Weight/ctn : 13.5 kg

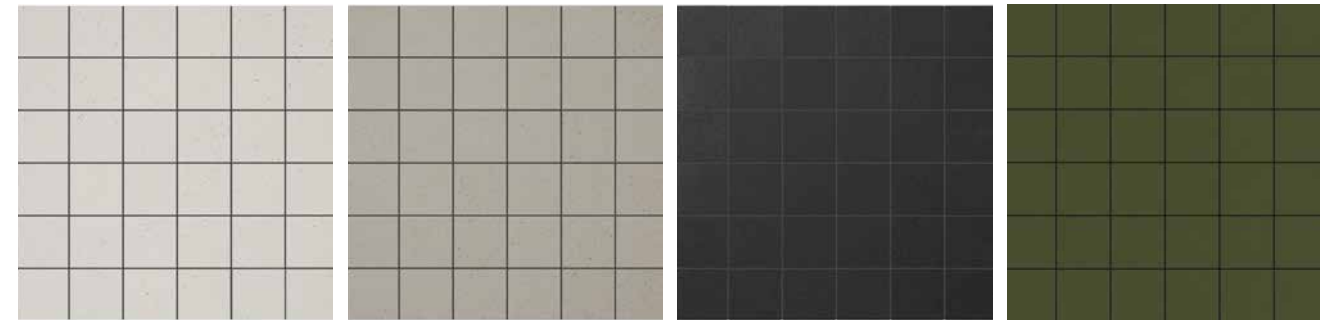


Installation Material and grouting:  
Adhesive ○ Mortar × Grouting ○



# SUGIE SERIES

## Colour



SU-2031

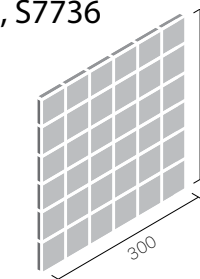
T5814

T5816

S7736

### SU-2031, T5814, T5816, S7736

- Size/pc : 47x47 mm
- Size/sht : 300x300 mm
- Thickness : 7 mm
- Quantity/sqm : 11.5 shts
- Quantity/ctn : 22 shts



Installation Material and grouting:  
 Adhesive  Mortar  Grouting

Front paper



# FORMAT

## Colour



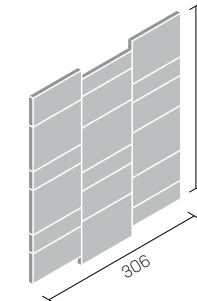
YM-FORM/WH-MIX

YM-FORM/BL-MIX

YM-FORM/S197RS-6591

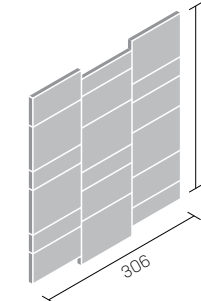
### YM-FORM/WH-MIX, BL-MIX

- Size/pc : 100×30 mm  
100×50 mm  
100×75 mm
- Size/sht : 306×322 mm
- Thickness : 7mm, 9.5mm Mix
- Quantity/sqm : 10.2 shts
- Quantity/ctn : 10 shts
- Weight/ctn : 15 kg



### YM-FORM/S197RS-6591

- Size/pc : 100×30 mm  
100×50 mm  
100×75 mm
- Size/sht : 306×322 mm
- Thickness : 7mm
- Quantity/sqm : 10.2 shts
- Quantity/ctn : 10 shts
- Weight/ctn : 15 kg



Installation Material and grouting:  
Adhesive ○ Mortar × Grouting ×\*

Net mounted on back

\* Designed for open joint installation. But grouting is recommended for bathroom wall installation to avoid joints from being stained or smelling unpleasant.



# HOSOWARI BORDER

## Colour

[ Random ]



HAL-20BR/HB-1



HAL-20BR/HB-3



HAL-20BR/HB-5



HAL-20BR/HB-6



HAL-20BR/HB-7



HAL-20BR/HB-11



HAL-20BR/HB-12

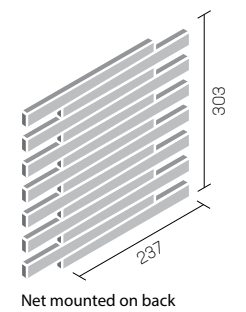


HAL-20BR/HB-13

### HAL-20BR/HB-1~HB-13

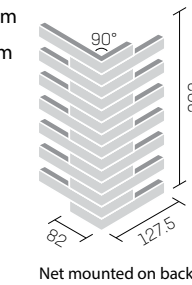
- Size/pc : 235×19.5 mm
- Size/sht : 237×303 mm
- Thickness : 13.5 mm
- Quantity/sqm : 14 shts
- Quantity/ctn : 14 shts
- Weight/ctn : 19.9 kg

Installation Material and grouting:  
Adhesive ○ Mortar × Grouting ×



### Corner Tile HAL-20BR/90-14/HB-1~HB-13 HAL-20BN/90-14/HB-1~HB-13

- Size/pc : (80+125.5)×19.5 mm
- Size/sht : (82+127.5)×303 mm
- Thickness : 13.5 mm
- Quantity/m : 3.3 shts
- Quantity/ctn : 12 shts
- Weight/ctn : 14.1 kg



## Surface

[ Normal ]



HAL-20BN/HB-1

### HAL-20BN/HB-1~HB-13

- Size/pc : 235×19.5 mm
- Size/sht : 237×303 mm
- Thickness : 13.5 mm
- Quantity/sqm : 14 shts
- Quantity/ctn : 14 shts
- Weight/ctn : 20.5 kg



# SEKIHA

## Colour



HAL-R/SKH-1

HAL-R/SKH-2

HAL-R/SKH-3

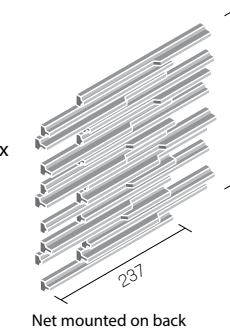
HAL-R/SKH-4

HAL-R/SKH-5

### HAL-R/SKH-1~SKH-5

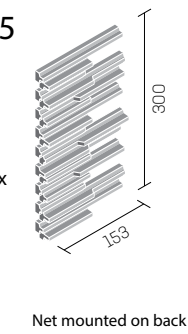
- Size/pc : 235×14 mm
- Size/sht : 237×300 mm
- Thickness : 14.5 mm, 18 mm Mix
- Quantity/sqm : 14.1 shts
- Quantity/ctn : 14 shts
- Weight/ctn : 19.7 kg

Installation Material and grouting:  
Adhesive ○ Mortar × Grouting ×



### Corner Tile HAL-CN/SKH-1~SKH-5

- Size/pc : 151×14 mm  
82×14 mm
- Size/sht : 153×300 mm
- Thickness : 11 mm, 14.5 mm, 18 mm Mix
- Quantity/m : 6.7 shts
- Quantity/ctn : 14 shts
- Weight/ctn : 9.9 kg





# OMBRE BORDER

## Colour



DCF-20BNET/OMB-1

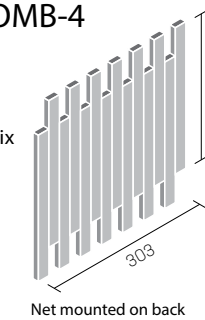
DCF-20BNET/OMB-2

DCF-20BNET/OMB-3

DCF-20BNET/OMB-4

### DCF-20BNET/OMB-1~OMB-4

- Size/pc : 19.5×235 mm
- Size/sht : 303×237 mm
- Thickness : 8 mm, 13.5 mm Mix
- Quantity/sqm : 14 shts
- Quantity/ctn : 14 shts
- Weight/ctn : 18.9 kg

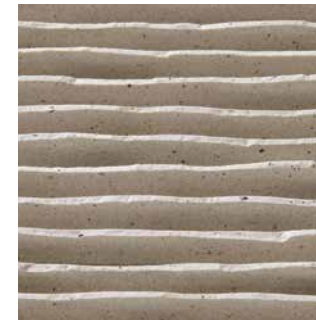


Installation Material and grouting:  
Adhesive ○ Mortar × Grouting ×

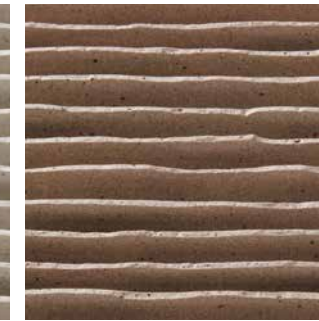


# TOUJURIN

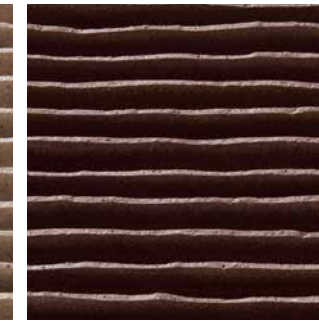
## Colour



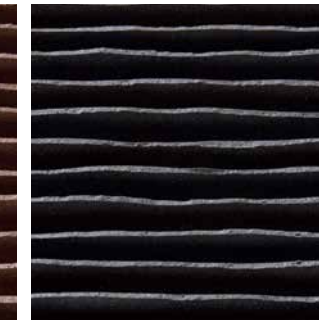
HAL-R/BLD-1



HAL-R/BLD-2



HAL-R/BLD-3

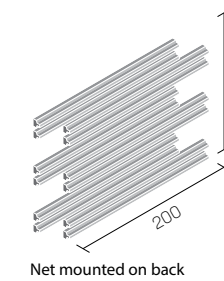


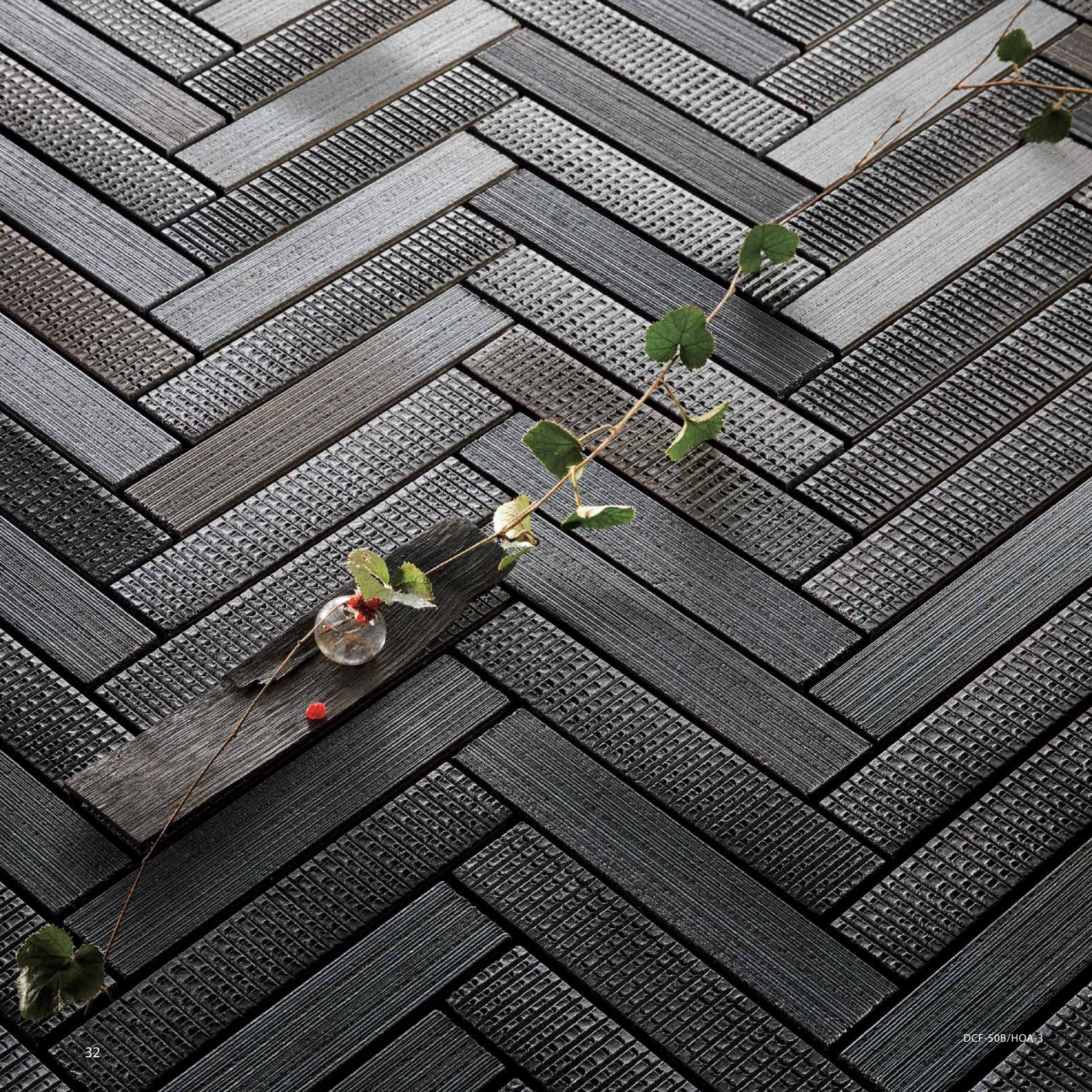
HAL-R/BLD-4

### HAL-R/BLD-1~BLD-4

- Size/pc : 198×10 mm
- Size/sht : 200×150 mm
- Thickness : 30 mm
- Quantity/sqm : 34 shts
- Quantity/ctn : 10 shts
- Weight/ctn : 7 kg

Installation Material and grouting:  
 Adhesive ○ Mortar × Grouting ×





# HOMURA

## Colour



DCF-50B/HOA-1



DCF-50B/HOA-2

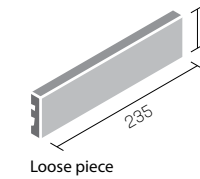


DCF-50B/HOA-3

### DCF-50B/HOA-1~HOA-3

- Size/pc : 235×45 mm
- Thickness : 12 mm
- Quantity/sqm : 84 pcs
- Quantity/ctn : 84 pcs
- Weight/ctn : 22 kg

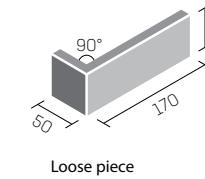
Installation Material and grouting:  
 Adhesive ○ Mortar ○ Grouting ×



Loose piece

### Corner Tile DCF-50B/90-14/HOA-1~HOA-3

- Size/pc : (170+50)×45 mm
- Thickness : 12 mm
- Quantity/m : 20 pcs
- Quantity/ctn : 20 pcs
- Weight/ctn : 5 kg



Loose piece



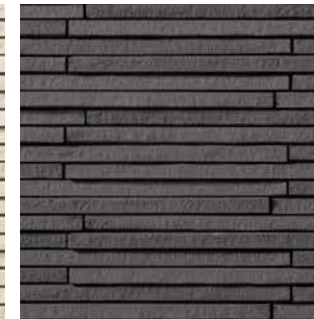


# SENTOUSAI

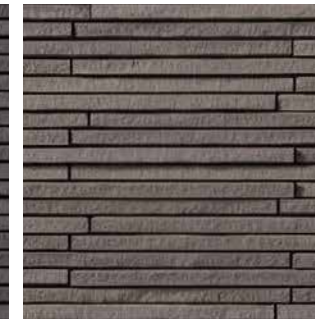
## Colour



HAL-RN/STS-11



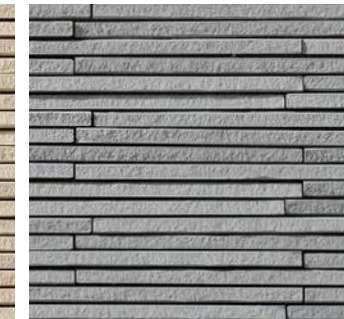
HAL-RN/STS-12



HAL-RN/STS-13



HAL-RN/STS-14

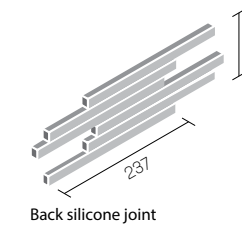


HAL-RN/STS-15

### HAL-RN/STS-11~STS-15

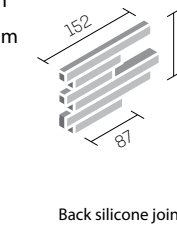
- Size/pc : 235×13 mm
- Size/sht : 237×90 mm
- Thickness : 22 mm
- Quantity/sqm : 46.9 shts
- Quantity/ctn : 30 shts
- Weight/ctn : 18.3 kg

Installation Material and grouting:  
Adhesive ○ Mortar × Grouting ×



### Corner Tile HAL-CN/STS-11~STS-15

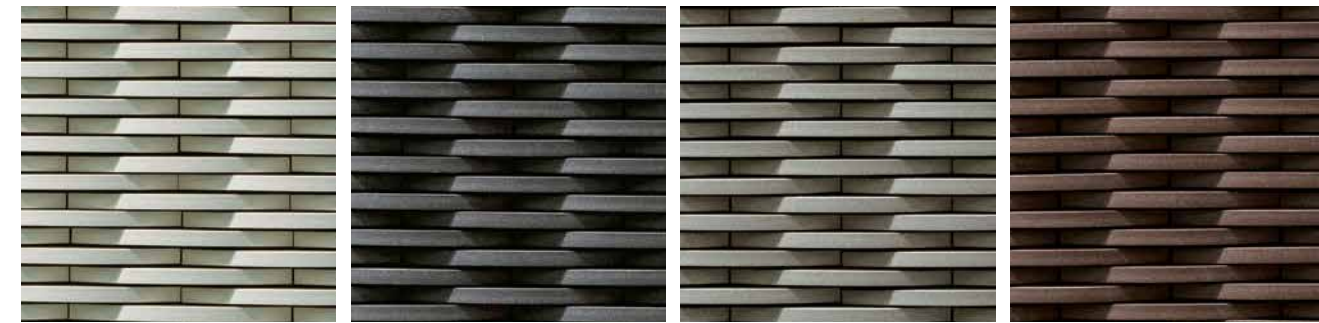
- Size/pc : 150×13 mm  
85×13 mm
- Size/sht : 152×90 mm
- Thickness : 22 mm
- Quantity/m : 22.3 shts
- Quantity/ctn : 30 shts
- Weight/ctn : 9.5 kg





# CRESCENT BORDER

## Colour



DCF-10BNET/CRS-1

DCF-10BNET/CRS-2

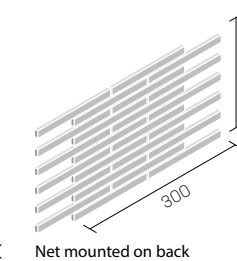
DCF-10BNET/CRS-3

DCF-10BNET/CRS-4

### DCF-10BNET/CRS-1~CRS-4

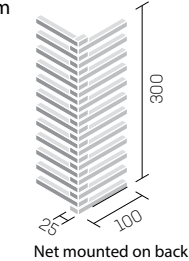
- Size/pc : 147.5×10 mm
- Size/sht : 300×150 mm
- Thickness : 22 mm
- Quantity/sqm : 22.3 shts
- Quantity/ctn : 12 shts
- Weight/ctn : 15.2 kg

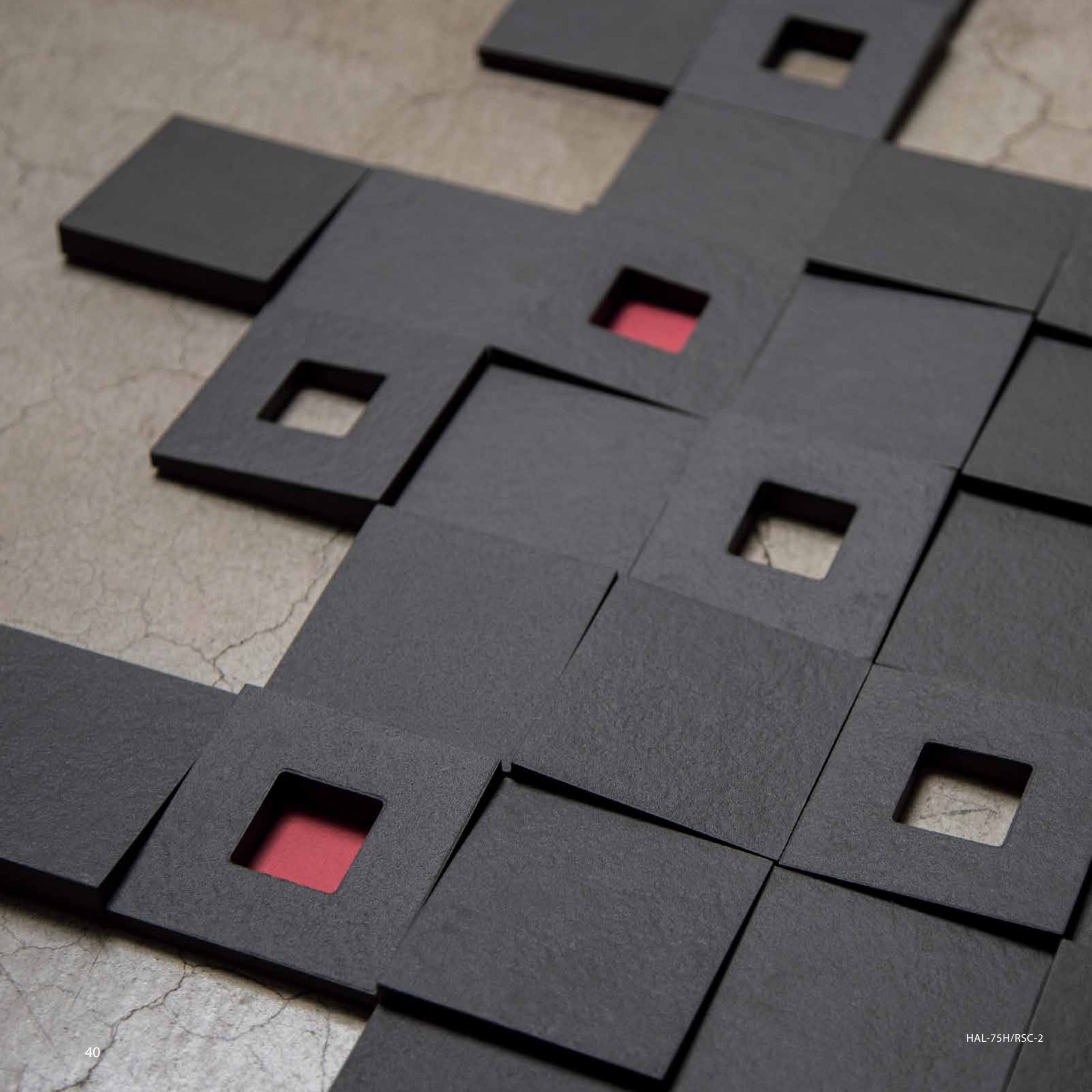
Installation Material and grouting:  
 Adhesive ○ Mortar × Grouting ×



### Corner Tile DCF-10BNET/90-14/CRS-1~CRS-4

- Size/pc : (97.5+22.5)×10 mm
- Size/sht : (100+25)×300 mm
- Thickness : 7 mm
- Quantity/m : 3.4 shts
- Quantity/ctn : 10 shts
- Weight/ctn : 6.9 kg

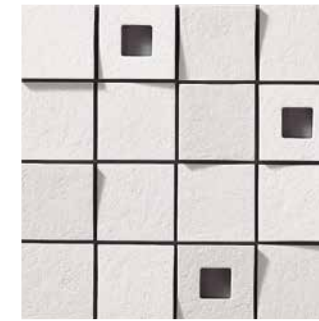




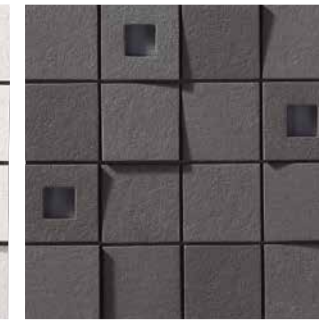
# LASCAVE

## Colour

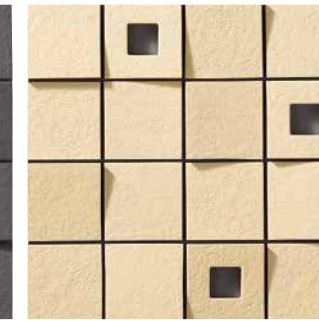
[ Uneven with hole ]



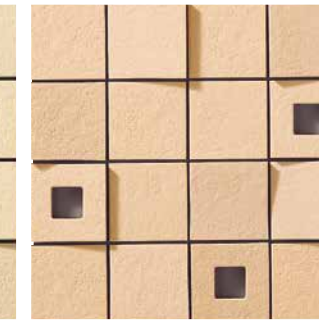
HAL-75H/RSC-1



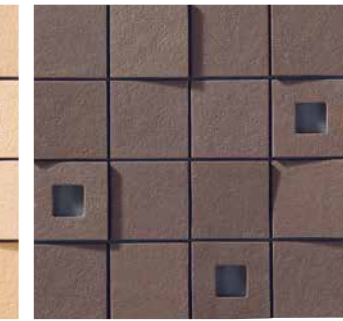
HAL-75H/RSC-2



HAL-75H/RSC-3



HAL-75H/RSC-4

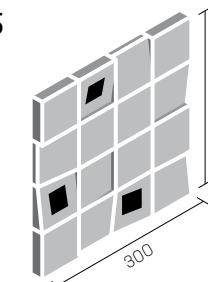


HAL-75H/RSC-5

### HAL-75H/RSC-1~RSC-5

- Size/pc : 72×72 mm
- Size/sht : 300×300 mm
- Thickness : 14 mm
- Quantity/sqm : 11.5 shts
- Quantity/ctn : 8 shts
- Weight/ctn : 15.5 kg

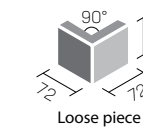
Installation Material and grouting:  
Adhesive ○ Mortar × Grouting ×



Back silicone joint

### Corner Tile HAL-75/90-14/RSC-1~RSC-5

- Size/pc : (72+72)×72 mm
- Thickness : 8 mm
- Quantity/m : 14 pcs
- Quantity/ctn : 80 pcs
- Weight/ctn : 15.2 kg



Loose piece

## Surface

[ Uneven without hole ]

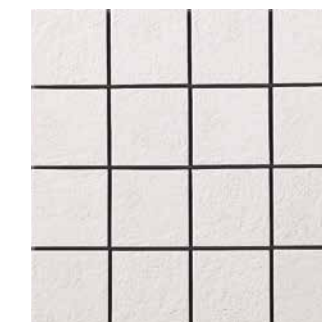


HAL-75T/RSC-1

### HAL-75T/RSC-1~RSC-5

- Size/pc : 72×72 mm
- Size/sht : 300×300 mm
- Thickness : 14 mm
- Quantity/sqm : 11.5 shts
- Quantity/ctn : 8 shts
- Weight/ctn : 16 kg

[ Flat without hole ]



HAL-75/RSC-1

### HAL-75/RSC-1~RSC-5

- Size/pc : 72×72 mm
- Size/sht : 300×300 mm
- Thickness : 8 mm
- Quantity/sqm : 11.5 shts
- Quantity/ctn : 10 shts
- Weight/ctn : 15.9 kg

優美にして、精妙。

Exquisite beauty, perceptively luxuriant.



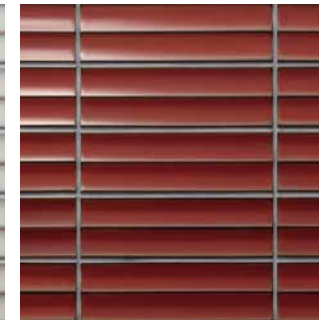


# IZUMO

## Colour



IZM-310/1



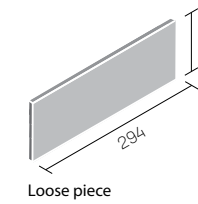
IZM-310/2



IZM-310/3

### IZM-310/1~3

- Size/pc : 294×94 mm
- Thickness : 13 mm
- Quantity/sqm : 33.4 pcs
- Quantity/ctn : 33 pcs
- Weight/ctn : 25 kg

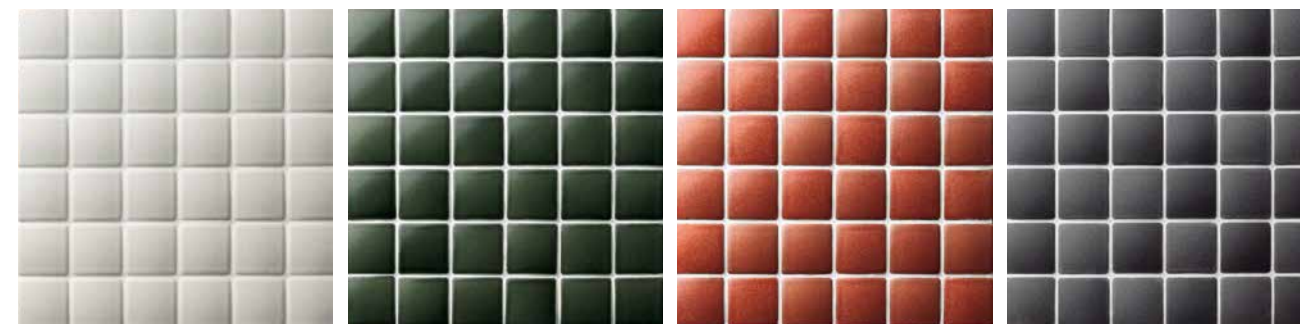


Installation Material and grouting:  
Adhesive ○ Mortar ○ Grouting ○



# MADOKA-R

## Color



IM-45P1/MDK-31

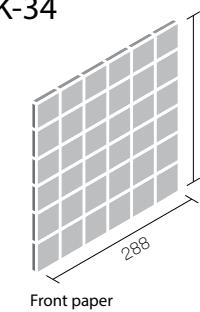
IM-45P1/MDK-32

IM-45P1/MDK-33

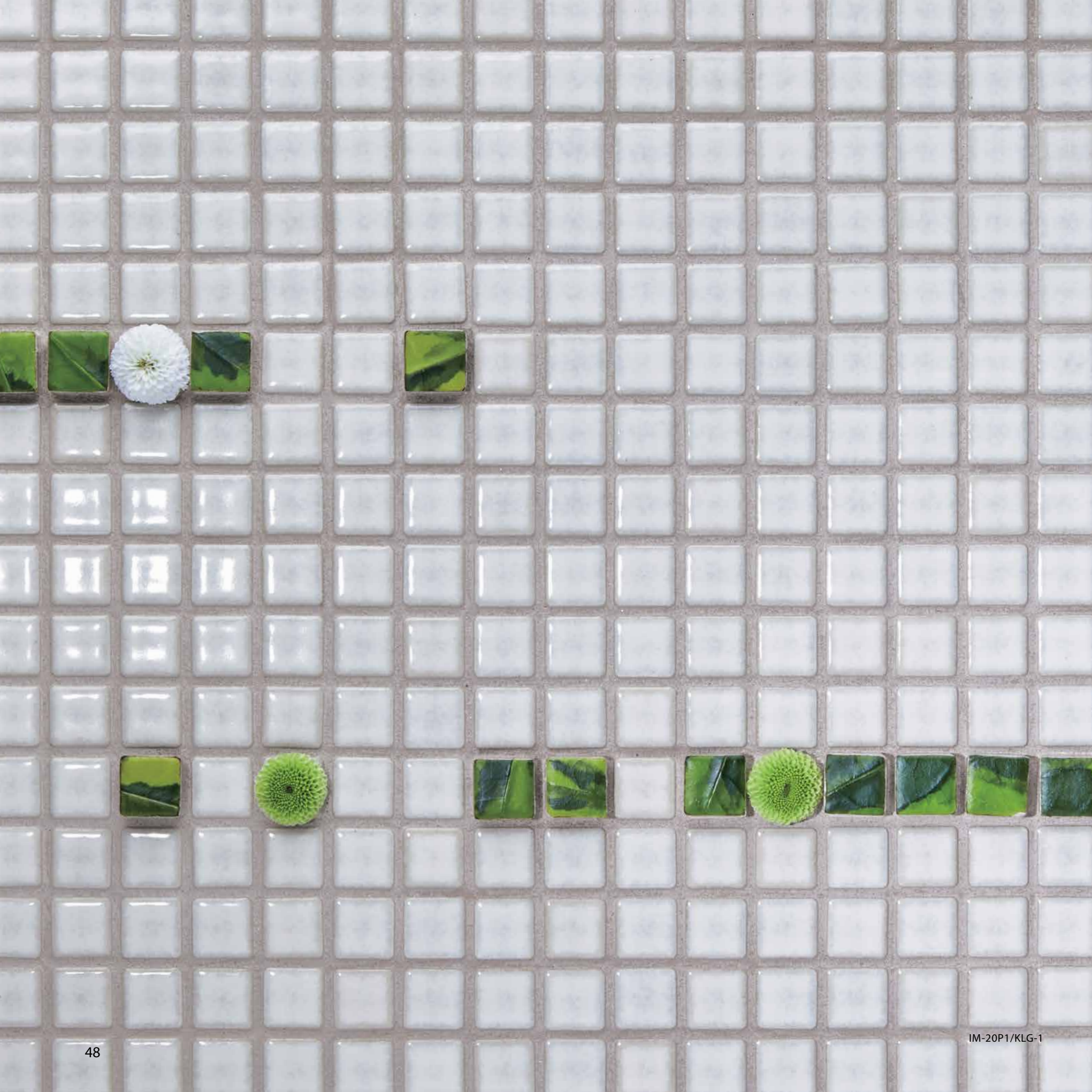
IM-45P1/MDK-34

### IM-45P1/MDK-31~MDK-34

- Size/pc : 45x45 mm
- Size/sht : 288x288 mm
- Thickness : 9.5 mm
- Quantity/sqm : 12.1 shts
- Quantity/ctn : 18 shts
- Weight/ctn : 22.5 kg



Installation Material and grouting:  
 Adhesive  Mortar  Grouting

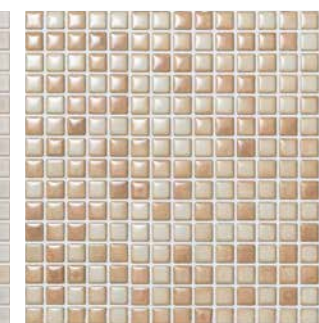


# KALEIDO GLAZE

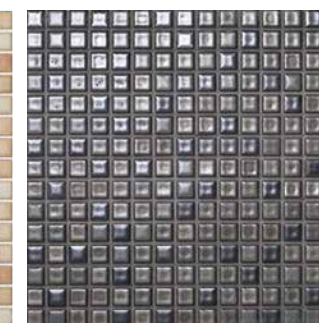
## Colour



IM-20P1/KLG-1



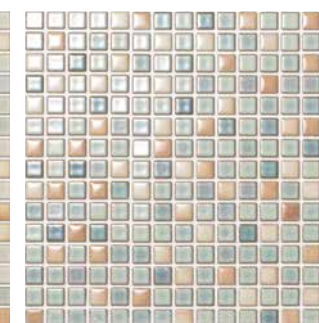
IM-20P1/KLG-2



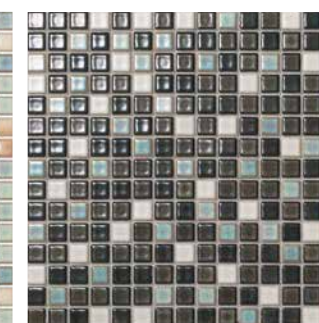
IM-20P1/KLG-3



IM-20P1/KLG-11



IM-20P1/KLG-12

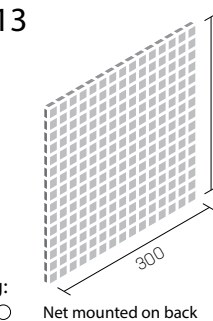


IM-20P1/KLG-13

### IM-20P1/KLG-1~KLG-13

- Size/pc : 17.5×17.5 mm
- Size/sht : 300×300 mm
- Thickness : 6 mm
- Quantity/sqm : 11.5 shts
- Quantity/ctn : 18 shts
- Weight/ctn : 16.5 kg

Installation Material and grouting:  
 Adhesive ○ Mortar × Grouting ○





# RHYTHMIC II

## Colour



HAL-20B/RYS-1



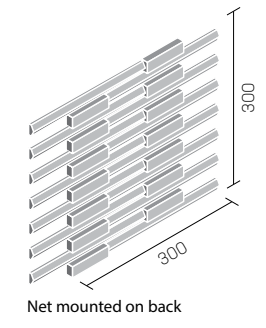
HAL-20B/RYS-2



HAL-20B/RYS-3

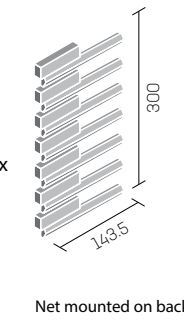
### HAL-20B/RYS-1~RYS-3

- Size/pc : 222.5×19.5 mm  
70.5×19.5 mm
  - Size/sht : 300×300 mm
  - Thickness : 10mm, 13mm Mix
  - Quantity/sqm : 11.2 shts
  - Quantity/ctn : 12 shts
  - Weight/ctn : 21.1 kg
- Installation Material and grouting:  
Adhesive  Mortar  Grouting



### Corner Tile HAL-C/RYS-1~RYS-3

- Size/pc : 141.5×19.5 mm  
70.5×19.5 mm
- Size/sht : 143.5×300 mm
- Thickness : 10 mm, 13 mm Mix
- Quantity/m : 6.7 shts
- Quantity/ctn : 24 shts
- Weight/ctn : 15.8 kg





“Letting flowers live,” Japan’s very own aesthetic expression is practiced by Naoki Sasaki through kado, or flower arrangement. The sensitivity to encapsulate natural beauty aligns with the provenance of INAX tile. Our encounter and accord led to the co-creation of imagery expressed in this brochure.

Floral Artist **Naoki Sasaki**

Sasaki was born in Komono-cho, Mie Prefecture in 1967. Taking over his family’s flower shop at the age of 23, he has been arranging flowers to his own style ever since. Sasaki has received awards not only in Japan but also overseas, including Belgium, Australia, and Singapore, and has gained international recognition for his work. He crafted creative, spatial floral decorations through which he was able to express Japanese beauty with flowers at the G8 Hokkaido Toyako Summit, APEC Japan 2010, and the G7 Ise-Shima Summit. Sasaki is Japan’s leading floral artist who actively holds numerous installations and workshops in Japan and overseas.

Photograph by Kohei Kishi

Cover, P2-3, P6-7, P8, P10, P12, P14, P16, P18, P20, P22, P26, P28, P30-31, P32, P34, P36, P38, P40, P42, P44, P46, P48, P50

Version 1.0  
Published on March 23, 2020  
LIXIL Corporation

Printed in Japan  
©2020 LIXIL Corporation

All rights reserved. No part of this publication may be reproduced, stored in a retrieval system or transmitted, in any form or by any means, electronic, mechanical, photocopying, recording or otherwise, without permission in writing from the publisher.