

CARRARA

Lavabo rettangolare in marmo bianco di Carrara, senza foro per rubinetto, a scarico libero; supportato da struttura in acciaio inox lucido. Utilizza piletta .METO415, o .METO418L con sifone a scomparsa .PLA0456 e AKIT0731.

Rectangular washbasin in white Carrara marble, without overflow, without tap hole; supported by polished stainless steel structure. Designed to take waste .METO415, or .METO418L with concealed waste trap .PLA0456 and AKIT0731.

ART. / ITEM

ACER0730S

CAPACITÀ / CAPACITY

- lt
- gall

PESO / WEIGHT

34 kg
75 lb

IMBALLO / PACKAGING

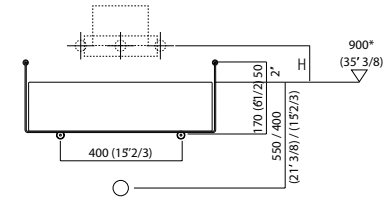
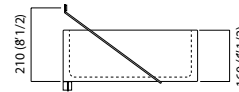
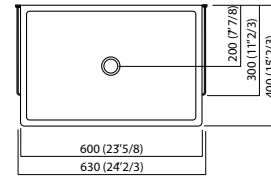
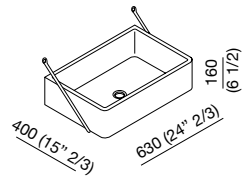
70 x 48 x 28 cm
27"4/8 x 18"7/8 x 11"



PESO TOTALE / TOTAL WEIGHT

41 kg
90 lb

1:25



0.00
▽

* h. consigliata - advised h.

ABBINAMENTO RUBINETTERIA / TAP COMBINATION

Rubinetteria a parete /Wall mounted tap:

- FEZ ARUB260, ARUB12015/20, ARUB13015/20
- MEMORY ARUB1031, ARUB1036, ARUB1087
- SEN ASEN912HS
- SQUARE ARUB09360C ARUB0931C, ARUB1009C, ARUB1023C, ARUB1026C
- SUITE ARUB1102

Distanza tra lavabo e rubinetteria
Distance between washbasin and tap

H mm	Rubinetteria / Taps
120 (4"3/4) -150 (5"7/8)	Fez, Memory, Suite
150 (5"7/8) - 180 (7"1/8)	Square ...C
120 (4"3/4) -150 (5"7/8)	Square ...D
80 (3"1/8) -120 (4"3/4)	Sen

Con sifone ad incasso .PLA0456 e AKIT0731 distanza minima tra filo superiore lavabo e centro scarico mm 200

With concealed waste trap .PLA0456 and AKIT0731 minimum distance between upper washbasin edge and drain centre mm 200 (7"7/8)

FISSAGGIO / FIXING

Il lavabo è fissato a parete con viti e tasselli ad espansione.
The washbasin is fixed to the wall by means of screws and wall plugs.

con riserva di variazioni tecniche e tolleranze / Agape srl reserves the right to technical/tolerance changes