

CUBE

Lavabo quadrato in multistrato waterproof di betulla con rivestimento in rovere chiaro, naturale, medio, bruno, scuro o in teak senza foro per rubinetto a scarico libero. Utilizza piletta .MET0415 già assemblata al lavabo.

Square washbasin in waterproof birch plywood with light, natural, medium, brown, dark oak or teak veneer, without tap hole. This washbasin comes fitted with the .MET0415 waste.

ART. / ITEM

ACER0770M

CAPACITÀ / CAPACITY

- lt
- gall

PESO / WEIGHT

15 kg
33 lb

IMBALLO / PACKAGING

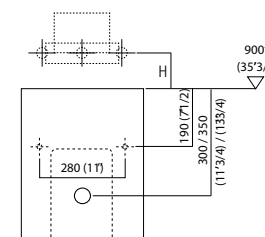
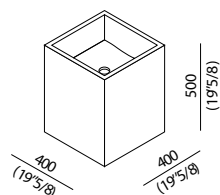
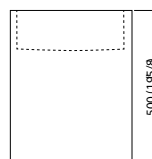
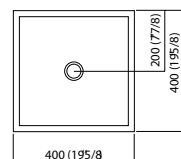
47 x 44 x 66 cm
18"4/8 x 17"3/8 x 26"



PESO TOTALE / TOTAL WEIGHT

17 kg
37 lb

1:25



0,00

* h. consigliata - advised h.

ABBINAMENTO RUBINETTERIA / TAP COMBINATION

Rubinetteria a parete / Wall mounted tap:

- FEZ ARUB260, ARUB12015/20, ARUB13015/20
- MEMORY ARUB1031, ARUB1036, ARUB1087
- SEN ASEN912HS
- SQUARE ARUB09360C ARUB0931C, ARUB1009C, ARUB1023C, ARUB1026C
- SUITE ARUB1102

Distanza tra lavabo e rubinetteria
Distance between washbasin and tap

H mm	Rubinetteria / Taps
120 (4"3/4) - 150 (5"7/8)	Fez, Memory, Suite
150 (5"7/8) - 180 (7"1/8)	Square ...C
120 (4"3/4) - 150 (5"7/8)	Square ...D
80 (3"1/8) - 120 (4"3/4)	Sen

FISSAGGIO / FIXING

Il lavabo è fissato a parete con viti e tasselli ad espansione.
The washbasin is fixed to the wall by means of screws and wall plugs.

con riserva di variazioni tecniche e tolleranze / Agape srl reserves the right to technical/tolerance changes