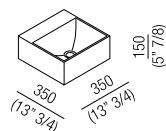


**HANDWASH**

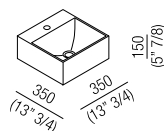
Lavamani squadrato in Cristalplant® bianco, con o senza foro per rubinetto, a scarico libero, compreso di kit di fissaggio. Disponibile anche nella versione con vano portaoggetti laterale. ACER0994 utilizza piletta .MET0415 o .MET0418L con sifone a scomparsa .PLA0456. ACER0955 utilizza piletta .MET0415 anche con sifone a scomparsa .PLA0456 e AKIT0731.

White Cristalplant® square handbasin, available with or without tap hole, without overflow. Fixing kit included. Model with side storage shelf also available. ACER0994 is designed for waste .MET0415 or .MET0418L with concealed waste trap .PLA0456. ACER955 is designed for waste .MET0415 also with concealed waste trap .PLA0456 and AKIT0731.

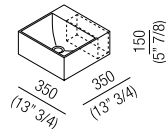
**ACER09940RZ**



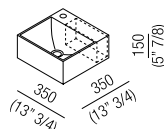
**ACER09941RZ**



**ACER9950RZ**



**ACER9951RZ**



**ABBINAMENTO RUBINETTERIA / TAP COMBINATION**

Rubinetteria a parete / Wall mounted tap:

FEZ ARUB260, ARUB12015/20, ARUB13015/20  
 MEMORY ARUB1031, ARUB1036, ARUB1087  
 SEN ASEN912HS solo/only A CER995RZ  
 SQUARE ARUB09360C ARUB0931C, ARUB1009C, ARUB1023C, ARUB1026C

SUITE ARUB1102  
 Monoforo / One-hole tap:

FEZ ARUB100120, ARUB100150  
 MEMORY ARUB1035, ARUB1039  
 SEN ASEN0910  
 SQUARE ARUB0950  
 SUITE ARUB1100

**FISSAGGIO / FIXING**

Il lavabo è fissato a parete con viti e tasselli ad espansione.  
 The washbasin is fixed to the wall by means of screws and wall plugs.

**ART. / ITEM**

**ACER0994**

- lt  
 - gall

**ACER0995**

- lt  
 - gall

**CAPACITÀ / CAPACITY**

**PESO / WEIGHT**

18 kg  
 40 lb  
 18 kg  
 40 lb

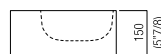
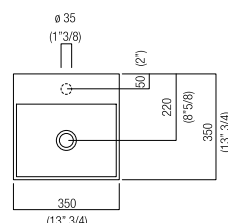
**IMBALLO / PACKAGING**

40 x 40 x 26 cm  
 15"6/8 x 15"6/8 x 7"7/8  
 40 x 40 x 26 cm  
 15"6/8 x 15"6/8 x 7"7/8

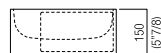
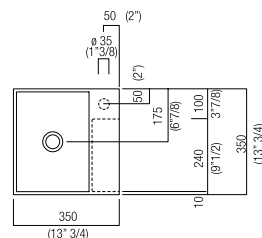
**PESO TOTALE / TOTAL WEIGHT**

21 kg  
 46 lb  
 21 kg  
 46 lb

**1:25**



**1:25**

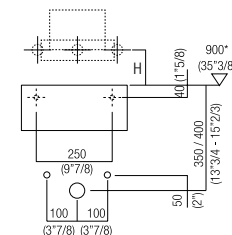


**ACER0994**

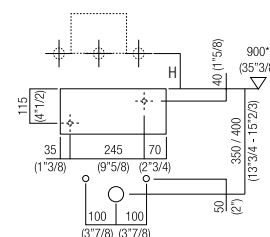
Con sifone ad incasso .PLA0456 distanza tra filo superiore lavabo e centro scarico mm 147  
 With concealed waste trap .PLA0456 distance between upper washbasin edge and drain centre mm 147 (5"3/4)

**ACER0995**

Con sifone ad incasso .PLA0456 e AKIT0731 distanza minima tra filo superiore lavabo e centro scarico mm 230  
 With concealed waste trap .PLA0456 and AKIT0731 minimum distance between upper washbasin edge and drain centre mm 230 (23"1/16)



0.00  
 \* h. consigliata - advised h.



0.00  
 \* h. consigliata - advised h.

Distanza tra lavabo e rubinetteria  
 Distance between washbasin and tap

H mm	Rubinetteria / Taps
120 (4"3/4) - 150 (5"7/8)	Fez, Memory, Suite
150 (5"7/8) - 180 (7"1/8)	Square ...C
120 (4"3/4) - 150 (5"7/8)	Square ...D
80 (3"1/8) - 120 (4"3/4)	Sen

con riserva di variazioni tecniche e tolleranze / Agape srl reserves the right to technical/tolerance changes