

artedomus



news features

edition 1



## introduction

words from phil brenton

The role of Artedomus is much more than simply a supplier. Rather, through our deep collaboration between architects and designers, commitment to sourcing the most unique products from around the world, Artedomus have become an active participant in the design industry more broadly.

Artedomus knows the power a singular product can make in a space. Founded in 1985 as Domus Ceramics, the company imported exclusive Italian floor and wall finishes to Australia, sourcing distinctive products with simple, intrinsic and timeless beauty. Domus quickly became a source of reference, inspiration and a preferred supplier for architects and designers.

Over the course of more than three decades, Artedomus has identified and discovered some of the most beautiful and recognisable marbles, limestones and sandstones in the design market, including Elba, Isernia and Bedonia. It is the exclusive supplier of INAX mosaics and architectural ceramics from Japan; the iconic Agape Italy bathware range; the Mangiarotti Collection of furniture from Agapecasa; and Le Corbusier LCS Ceramics based on the modernist

architect's béton brut and Polychromie Architecturale. Artedomus also pioneered the revolutionary Porcelain Panels. Artedomus have further become an active participant in the design industry more broadly since the release of New Volumes. We engage Australian designers to work entirely with our material to make beautiful objects for the home.

Artedomus is setting the benchmark in inimitable surfaces and exceptional design. We stand at the forefront of design, importing and developing truly exceptional and inimitable stone, tiles, architectural surfaces, bathware and furniture. Setting the benchmark in the industry, our new, innovative and custom product ranges push the boundaries of architectural materials.

We are proud to collaborate with Australia's best architects and designers who produce extraordinary projects.

A handwritten signature in black ink, appearing to read 'Phil Brenton'.

phil brenton  
managing director  
artedomus

# contents

## news features



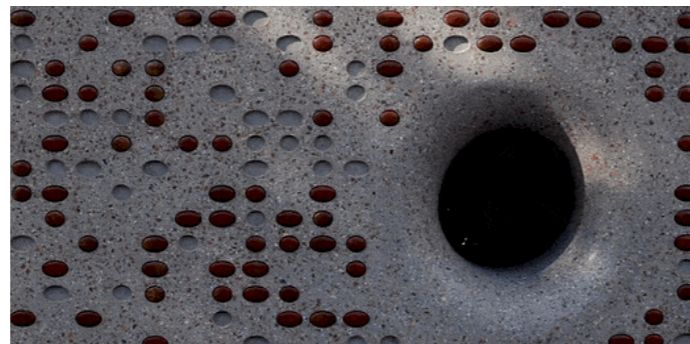
brisbane showroom  
the stella collective & thomas coward



6 new volumes exhibition  
fiona lynch & thomas coward 18

## product index

26 outro and contact page 32



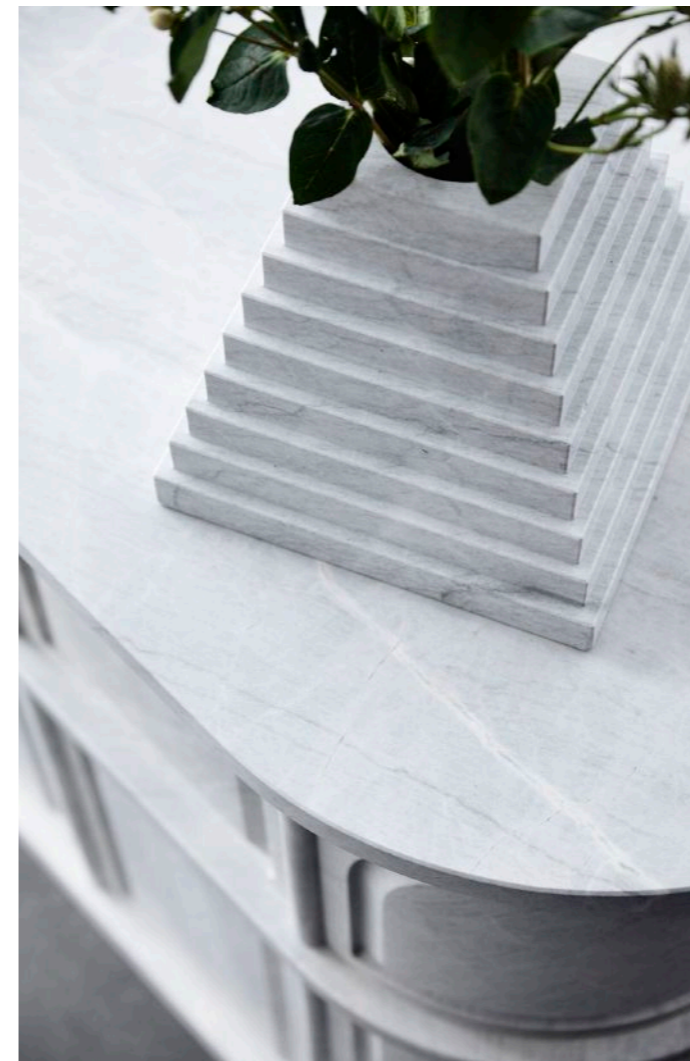


# Brisbane Showroom – The Stella Collective & Thomas Coward

WORDS Rose Onans  
PHOTOGRAPHY Derek Swalwell

Il Bosco, the new Artedomus showroom in Brisbane designed by the Stella Collective and Thomas Coward, is a reinterpretation of tropical design in Australia that draws inspiration from the glamour of 1980s Miami.

The design from Hana Hakim, director of the Stella Collective, and Thomas Coward elevates the showroom beyond simply a place to display products to create an immersive experience for all who visit. Having previously collaborated on the Sydney and Melbourne Artedomus showrooms, the designers sought to respond to the subtropical climate by imbuing the Brisbane space with an aesthetic that cultivates engagement of the senses.



The showroom design emphasises and elucidates the different qualities of the products on display.



With a light palette, plantation shutters and indoor plants, the Artedomus Brisbane showroom creates a breezy tropical atmosphere inspired by the glamour of 1980s Miami.

The 300-square metre warehouse in Fortitude Valley has been transformed into a series of spaces and zones that encourage visitors to not only view the range of tiles, stones, surfaces and bathware but to interact with them and experience each different product and material's different potential in a variety of applications. The Stella Collective and Thomas Coward drew on the iconic Miami Fontainebleau and Eden Rock hotels of the 1980s, harking back to the brilliance and glamour of a bygone era in which the heavy tropical air and waving palm trees of Miami Beach became synonymous with design

characterised by fountains, marble columns, glittering chandeliers, and grand proportions.

With the experience of the showroom conceived of as an inspiring journey that begins at the reception and culminates in the library, one enters through a garden to be greeted by an ornately carved marble reception desk offset by soft, 6-metre high billowing curtains. A light palette of white and pale grey, combined with the use of plantation shutters, creates a sense of cool breeziness, and indoor plants add a touch of greenery and reinforce the tropical aesthetic.





The materials library is a design studio of sorts, in which architects and their clients can meet.



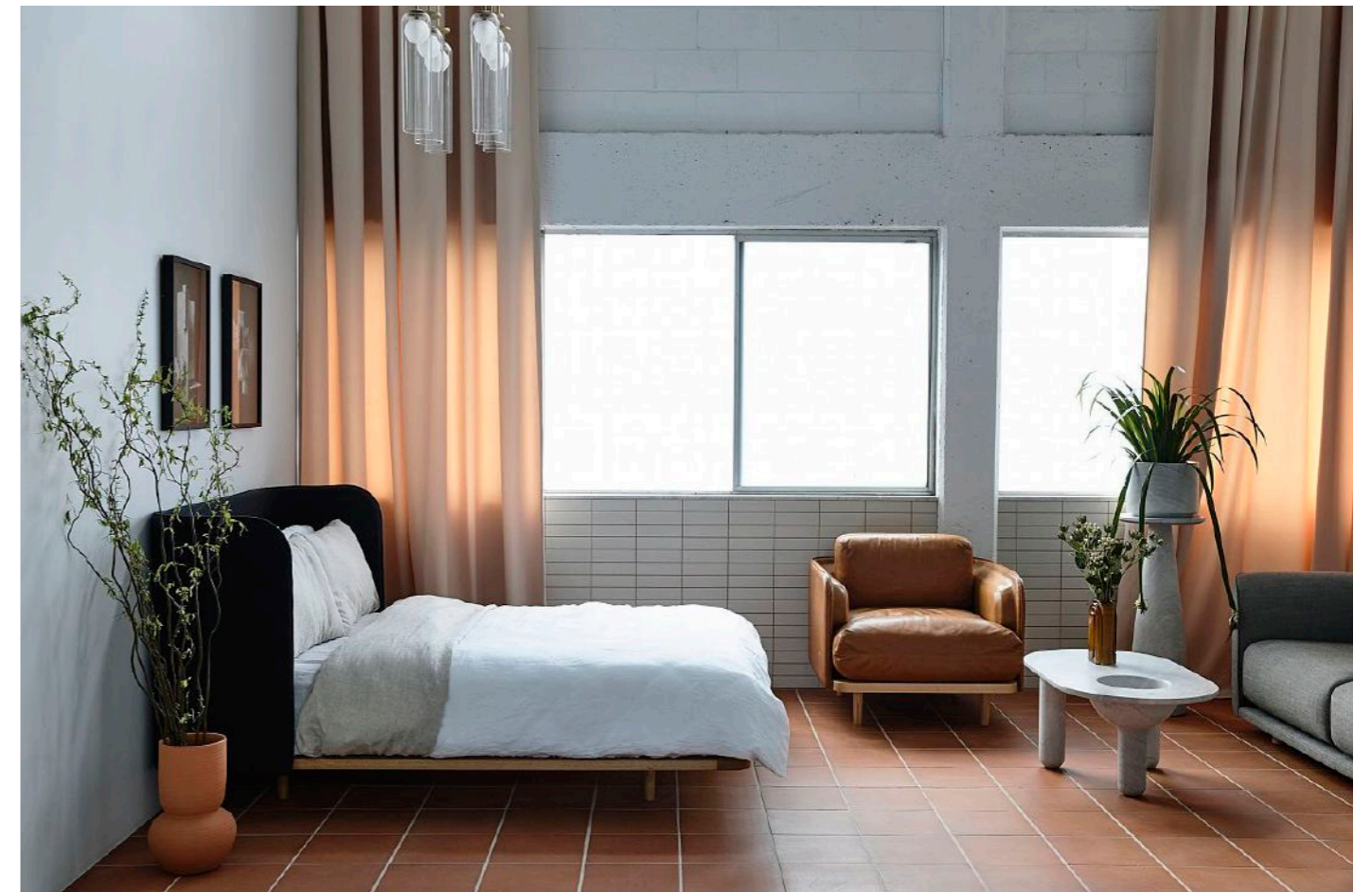
the design from hana hakim, director of the stella collective, and thomas coward elevates the showroom beyond simply a place to display products to create an immersive experience for all who visit.



While the Artedomus materials and products are undoubtedly the hero, each item is deliberately contextualised through the design of the showroom. Hana Hakim and Thomas Coward expertly emphasise the qualities of the products and materials by applying them at times in unexpected ways. Slabs of stone are employed as dividing screens, baths become sculptural elements in the space and the material library is interpreted through a number of curated shelves on which the tiles sit as beautiful objects.

In this way, the showroom evokes different interior spaces, from a kitchen, dining area, and bathroom to a sophisticated lounge. A range of Agape bathware and pieces from the Artedomus New Volumes Collection 01 are found throughout, while on each surface, another intriguing finish is to be found. The material library then acts as a design studio of sorts, where architects, designers and their clients can meet and go through the process of selecting finishes in an inspiring and beautiful environment.





“the showroom builds on the brilliance of our last two projects by hana and thomas.”

“The showroom builds on the brilliance of our last two projects by Hana and Thomas,” reflects Phil Brenton, Artedomus managing director. “Our showrooms are designed to welcome and inspire our visitors, taking them through conceptual spaces and considered vignettes into a selection area fit for any project. We’re thrilled with how Bosco delivers what designers expect from Artedomus while still giving our Brisbane flagship its own individual identity.”

---

This article originally featured on The Local Project.



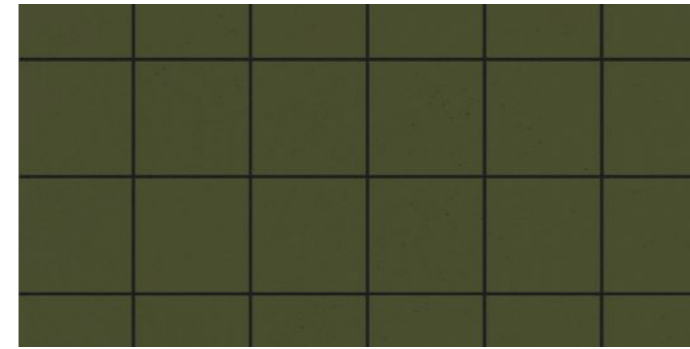
brisbane showroom by the stella collective & thomas coward  
featured artedomus collection



stone elba honed



stone rocca bianca honed



inax sugie series s7736 hanten



inax biyusai im50p1 bya 1



stone licycon flamed and brushed



cotto manetti naturale



agape ottocento bathtub



agape ottocento basin



maximum neptune



maximum bright onyx



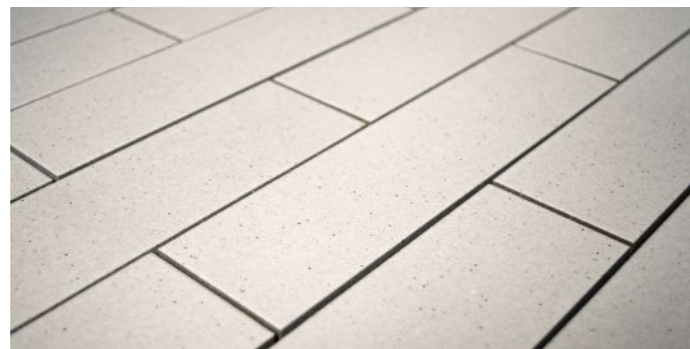
agape bjhon 1 pedestal basin



agape immersion pedestal basin



maximum saturn



inax reitz nicho



agape memory counter mounted progressive tap



agape memory mirror



## New Volumes™ Installation – Fiona Lynch & Thomas Coward

WORDS Rose Onans

PHOTOGRAPHY Sean Fennessy

Discovered in a quarry in Greece 20 years ago, Artedomus' Elba™ can trace its origins back 250 million years. The dolomite-based stone formed in a coral reef, where it was heated and compressed at the bottom of the ocean through the movement of tectonic plates. Now, the stone's remarkable history is celebrated through the Artedomus x New Volumes Collection in an installation by Fiona Lynch and Thomas Coward, which explores Elba's journey "from the ground to the house".



Rough-hewn blocks of Elba are juxtaposed with the clarity of the designs from the New Volumes collection, contrasting the material's strength and ancient history with its potential as a sculptural and architectural medium.

each piece is crafted from a solid block of elba, with no visible additional materials, creating a unique clarity and unity of form, material and function.





The New Volumes™ Collection was conceived by creative director Thomas Coward and Artedomus managing director Phil Brenton as an opportunity to explore and push the boundaries of a single material. Seven designers were approached to design for the collection, and the pieces are as diverse as the designers themselves. Every design, however, is united by the material – each piece is crafted from a solid block of Elba, with no visible additional materials, creating a unique clarity and unity of form, material and function.

For Melbourne Design Week, Thomas Coward collaborated with renowned designer Fiona Lynch to construct an installation of the New Volumes™ Collection. The installation juxtaposes the material's exceptional strength and ancient history with its tactility and softness, which makes it ideal used in both sculpture and architecture.

Exhibited in the TDF Gallery, rough-hewn Elba™ plinths quarried in Greece are contrasted with the organic curved forms of the New Volumes™

Collection, representing the journey of the material over time, "from the ground to the house". Presented in both its raw and refined states, visitors to the exhibition can engage with the material beyond the form in which it is usually encountered. The result creates the impression that these carefully designed, pure forms have somehow emerged from the block, and encourages consideration of our relationship with natural materials while highlighting Elba's unique qualities and potential.

The installation is a landscape for its visitors to explore, discovering the power and presence of this material hundreds of millions of years in the making. The installation is a landscape for its visitors to explore, discovering the power and presence of this material hundreds of millions of years in the making.

---

This article originally featured on The Local Project.

new volumes™ installation by fiona lynch & thomas coward  
featured artedomus collection



new volumes artemis candle holder



new volumes bacchus table



new volumes spomenik i bowl



new volumes spomenik ii vase



new volumes hemera lamp



new volumes hurlysi side tables



new volumes undara bowl



new volumes wyrie table



new volumes lydn platter



new volumes napoleon & josephine mortar & pestle



new volumes semper planter



new volumes semper vase

## product index

news features

Artedomus is Australia's leading supplier of unique, high quality stone, tiles, architectural surfaces, bathware and furniture for commercial and residential architectural projects.

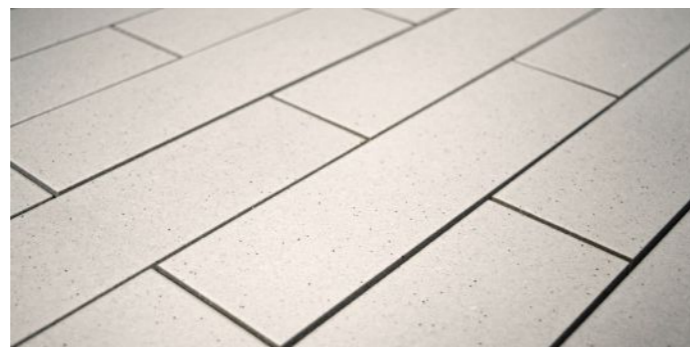
We have been searching for, and sourcing, unique stones, tiles, architectural surfaces and products from around the world and introducing them to Australia for 35 years. Some of the most beautiful and widely recognised marbles, limestones and sandstones in the design market today including Isernia, Bedonia and Elba have been favoured by leading architects and designers for their depth of colour, unique markings and distinctive natural qualities, all originally identified by Artedomus. With passion and expert understanding, we appreciate the power a unique natural product has to transform any design project into a singular work of art.



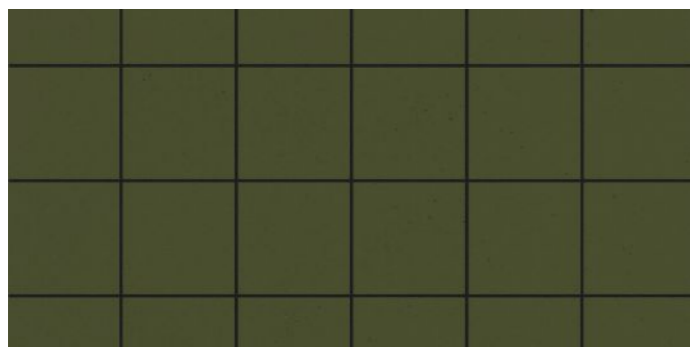
mosaic and ceramics



inax biyusai im50p1 bya 1

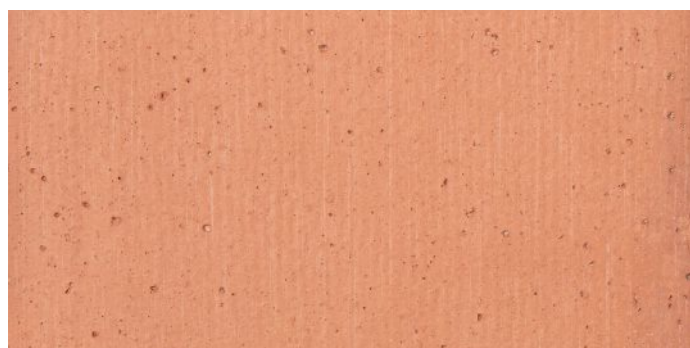


inax reitz nicho



inax sugie series s7736 hanten

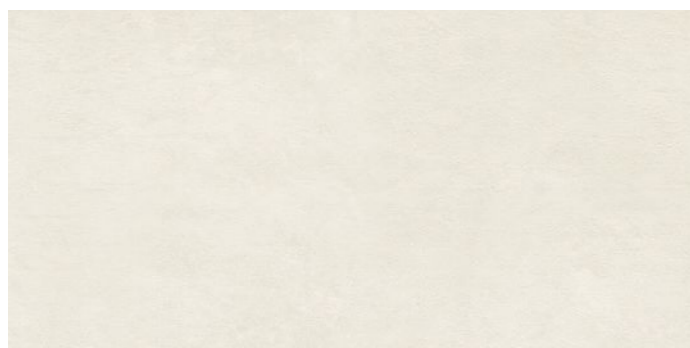
porcelain panel / tile



cotto manetti naturale



maximum bright onyx



maximum saturn



maximum neptune

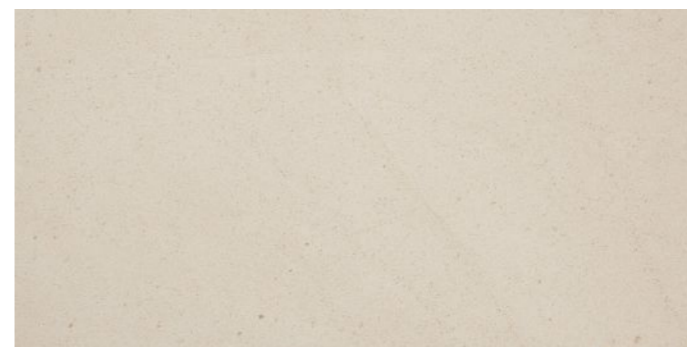
stone



stone elba honed



stone licycon flamed and brushed



stone rocca bianca honed

bathware



agape bjhon 1 pedestal basin



agape immersion pedestal basin



agape ottocento basin

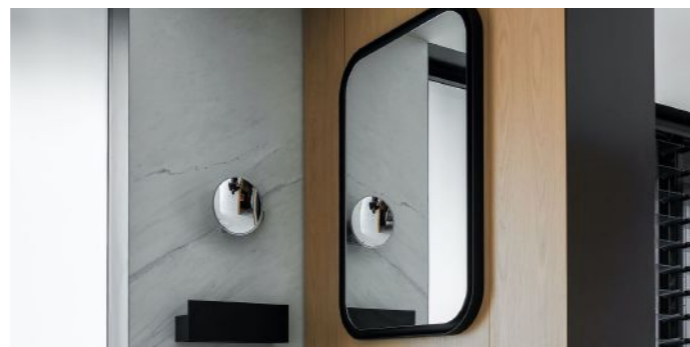


agape memory counter mounted progressive tap

bathware (cont.)



agape ottocento bathtub



agape memory mirror



new volumes semper planter



new volumes semper vase

new volumes furniture



new volumes artemis candle holder



new volumes bacchus table



new volumes spomenik i bowl



new volumes spomenik ii vase



new volumes hemera lamp



new volumes hurlysi side tables



new volumes undara bowl



new volumes wyrie table



new volumes lydn platter



new volumes napoleon & josephine mortar & pestle



## outro

words from phil brenton

An architectural finishes business, Artedomus began 30 years ago and now work nationally with showrooms and warehouses in Melbourne, Sydney, Perth and Brisbane. Reflecting on the changing role of the company, we do not see ourselves as suppliers of bathware or tiles but as part of the design industry.

This is reflected in our focus on offering timeless products that are not based on trends but on looking for the new and different. Artedomus are driven to inspire, both our clients and ourselves, constantly searching the world over to bring new and interesting products and materials to the Australian design industry.

Our distinctive range of natural stone has been unearthed from around the world. Carrying a wide range of exclusively sourced, highest-grade stone, the Artedomus collection includes limestones, marbles, sandstones, bluestones and technical patterned stones, many of which are not available anywhere else in Australia.

We have changed the face of architectural surfaces with our Porcelain Panels. Manufactured using innovative Italian-designed technology, the extra-large, fine-profile, lightweight panels have exceptional strength, durability, resistance and low-maintenance requirements.

Our extensive range of tiles include porcelain, architectural ceramics, mosaics and stone. Inax's exquisite range of tiles vary in texture, dimensionality, colour, glaze and style, and we work with the Japanese company on custom projects and tiles for the Australian market. Cotto Manetti's terracotta tiles are made in strict compliance with the ancient traditions of Impruneta, Italy, and use locally quarried clay that produces terracotta like nowhere else in the world.

We are the exclusive Australian supplier of Agape Italy bathware, which has pioneered the evolution in transforming bathrooms from purely functional spaces to places of wellbeing and relaxation.

Designed for the home and office, our furniture range pushes the possibilities of materials. New Volumes™ is collection designed by prominent Australian designers. New Volumes explores the potential of Artedomus materials to inspire and enhance the everyday.

Our people are as important as its products, and their passion for design is backed by expert understanding and knowledge. Highly experienced teams in the Artedomus showrooms in Sydney, Melbourne, Brisbane and Perth work closely with architects, designers and consumers to find the perfect solution. Each showroom is an inspirational and aspirational space that showcases the beauty, versatility and contemporary design of Artedomus products.



phil brenton  
managing director  
artedomus

# artedomus

[www.artedomus.com](http://www.artedomus.com)

1300 278 336

## sydney

[sydney@artedomus.com](mailto:sydney@artedomus.com)

+61 2 9557 5060

## melbourne

[melbourne@artedomus.com](mailto:melbourne@artedomus.com)

03 9429 0075

## perth

[perth@artedomus.com](mailto:perth@artedomus.com)

+61 8 9226 0288

## brisbane

[brisbane@artedomus.com](mailto:brisbane@artedomus.com)

07 3852 6788

follow us on

